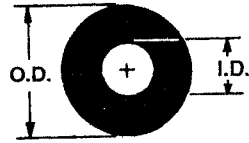
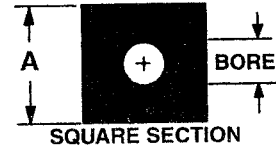


EXTRUDED FENDERS



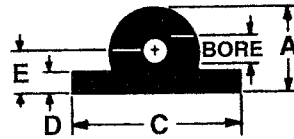
Cylindrical

Part No. Units	O.D. Inches	I.D. Inches	Wt. /Ft. Lbs.	R/E Kip/Ft. Kip
F3-0000	3	1.5	3	14
F3-8000	5	2.5	7	10
F3-9000	6	2	14	11
F3-1000	8	4	18.5	10
F3-2000	10	5	30	6.2
F3-5000	12	6	42.5	5.3
F3-6000	15	7.5	68.5	3.5
F3-3000	18	9	97.5	2.9



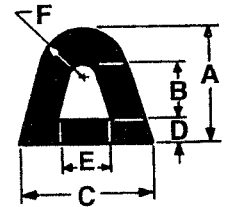
Square

Part No. Units	A Inches	Bore Inches	Wt./Ft. Lbs.	R/E Kip/Ft. Kip
F6-0000	4.5	1.5	4.5	20
F6-2000	6	2	17	16
F5-6000	7	2.5	22.5	12.5
F5-0000	8	3	29.5	10
F5-7000	10	4	45	8.5
F5-1000	12	5	63	7
F5-2000	14	6	81	3.7
G6-2000	16	7	112	2.5



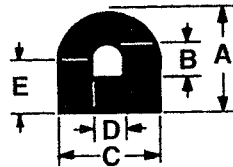
Cylindrical Wing

Part No. Units	A	Bore	C	D	E	Wt./Ft. Lbs.	R/E Kip/Ft. Kip
	Inches						
F7-0000	3	1	6	.75	1.5	4.3	25
F7-8000	4	2	7.5	1.0	2.25	10	19.5
F7-1000	6	3	9	1.5	3	15.5	13.5
F8-1000	8	4	12	2.0	4	30	11
F8-4000	10	5	15	2.5	5	44	9
F7-3000	12	6	18	3.0	6	58.5	6.3



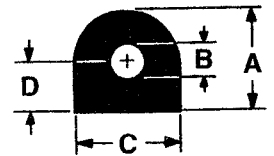
Slope Side "D" Shape

Part No. Units	A	B	C	D	E	F	Wt./Ft. Lbs.	R/E Kip/Ft. Kip
	Inches							
F9-4000	3.75	2.25	4.50	.75	2	1.50	4.5	16.7
F9-1000	6	3	6.75	1.25	2.87	2.37	12.3	13.3



"D" Shape - "D" Bore

Part No. Units	A	B	C	D	E	Wt./Ft. Lbs.	R/E Kip/Ft. Kip
	Inches						
G5-4000	6	3	5	2.5	3	11.5	15.2
F9-0000	8	4	8	4	4	22	10
G0-7000	10	5	10	5	5	38	8.6
F9-7000	12	6	12	6	6	54	7.7
G0-6000	14	7	14	7	7	73	4.2



"D" Shape - "O" Bore

Part No. Units	A	B	C	D	Wt./Ft. Lbs.	R/E Kip/Ft. Kip
	Inches					
F9-2000	6	2.5	5	3	11.5	15.2
F9-5000	8	3	8	4	22	10
G0-5000	10	4	10	5	38	8.6
F9-3000	12	5	12	6	54	7.7
F9-8000	14	6	14	7	73	4.2

Let us help with those hard to find items !

