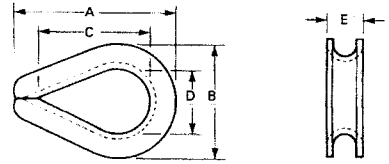


**Stainless Fittings**

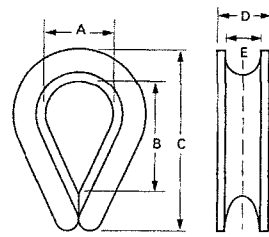
Size	Approx. Weight Each in Pounds	Heavy Duty Wire Rope Thimble / Stainless Steel Type 304				
		A	B	C	D	E
1/4"	.08	2.19	1.50	1.63	.88	.41
5/16"	.10	2.50	1.88	1.88	1.13	.50
3/8"	.25	2.88	2.09	2.09	1.13	.66
1/2"	.45	3.63	2.63	2.75	1.50	.88
5/8"	.68	4.25	3.09	3.25	1.75	1.00
3/4"	1.20	5.00	3.50	3.75	2.00	1.25
7/8"	1.85	5.66	4.19	4.31	2.25	1.50
1"	2.20	6.13	4.63	5.00	2.50	1.56
1.1/8"-1.1/4"	3.80	7.13	5.33	5.38	2.88	1.88
1.1/4"-1.3/8"	8.60	8.38	6.67	6.50	3.50	2.25

**Heavy Duty Wire Rope Thimble**  
Stainless Steel Type 304



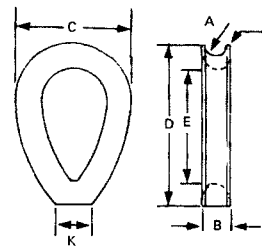
Size	Approx. Wt / Ctn. 100 Pcs. Kilograms	Standard Wire Rope Thimble / Stainless Steel Type 304				
		A	B	C	D	E
3/32"	.4	7.0	12	21	5.0	3
1/8"	.5	9.0	14	23	6.0	4
5/32"	.6	11.0	16	27	7.0	5
3/16"	.8	14.5	21	21	8.0	6
1/4"	1.0	16.0	26	39	9.5	7
7/32"	1.2	18.5	29	42	10.0	8
5/16"	2.2	21.0	35	50	12.0	9
9/32"	3.0	26.0	42	59	14.0	11
1/2"	4.8	31.0	48	70	17.5	14
9/16"	6.2	34.0	55	76	20.0	16
5/8"	8.2	39.0	63	85	21.0	17
1/16"	12.0	41.0	68	93	23.0	19
3/8"	15.5	45.0	73	103	26.0	22
7/8"	17.2	50.0	82	112	32.0	24
1"	21.2	54.0	92	125	34.0	26

**Thimbles/Standard**  
Stainless Steel Type 304 Forged



Size (inches)	Approx. Weight PC/ Kgs.	Heavy Duty Wire Rope Thimble / Lost Wax Stainless Steel Type 316						
		A (mm)	B (mm)	C (mm)	D (mm)	E (mm)	K (mm)	L (mm)
3/16"	.005	1.1R	5	15	21.0	15.0	6.4	0.75R
1/8"	.051	1.6R	6	20	26.0	18.0	8.4	0.75R
5/32"	.025	2.1R	7	25	32.0	21.0	11.0	0.75R
1/4"	.030	3.0R	9	32	43.0	27.5	11.0	0.75R
5/16"	.058	4.0R	10	41	58.5	43.0	13.0	0.50R
7/16"	.095	5.0R	13	50	72.0	50.5	14.0	0.75R
1/2"	.150	6.0R	16	60	86.0	62.0	16.0	1.00R
5/8"	.285	8.0R	20	75	110.0	81.5	21.0	1.00R
3/4"	.575	9.5R	24	90	124.0	94.0	31.0	1.25R
7/8"	.750	11.2R	28	100	130.0	100.0	38.0	1.40R
1"	.945	13.0R	32	116	148.0	115.0	48.0	1.50R

**Heavy Thimbles/Lost Wax**  
Stainless Steel Type 316



Let us help with those hard to find items !

