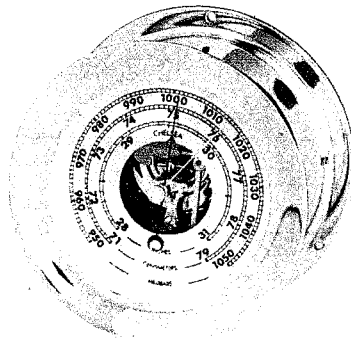
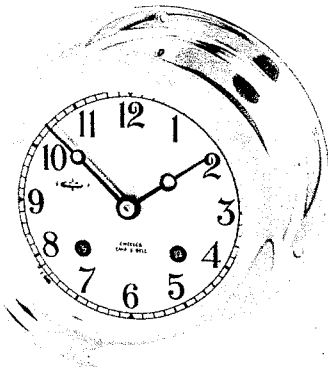


Chelsea's Famous Ship's Bell Clocks and Matching Barometers

Chelsea's Ship's Bell Clocks and Barometers are famous for their accuracy and rugged dependability in an often harsh environment. The 364 pieces in the clock are carefully protected from the corrosive effects of salt air. 24 karat gold plating, the most enduring material available, covers all of the internal brass moving parts. Dials are silverplated with permanently etched and enameled numerals. Both clocks and barometers are enclosed in one piece heavy forged brass cases. There are no riveted seams or holes to let in corrosive salt air or moisture. They are built to withstand extremes of temperature change, salt air and vibration. The case, acting as a bell, is responsible for the clear rich tone so memorable in Chelsea clocks. Accurate and dependable. Chelsea Ship's Bell Clocks and Barometers are built to endure, not just for one life time, but for generations to come.



Chelsea's Ship's Bell Clock
Available with 4 1/2" or 6" Dials.
Screw Bezel Models: #20500 & 20495
Hince Bezel Models: #20501 & 20496

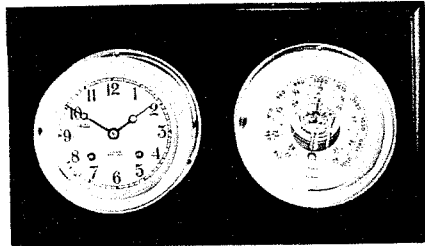
Chelsea's Matching Barometers
Available with 4 1/2" or 6" Dials.
Screw Bezel Only - Models: #20625 & 20825.

Display Bases and Plaques

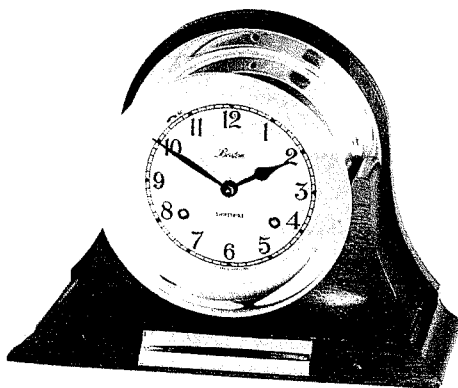
Traditional hand rubbed solid mahogany or contemporary ebony finish. Engraving plates can be fitted to each model.

Contemporary Ebony Bases...

Traditional Mahogany Bases...

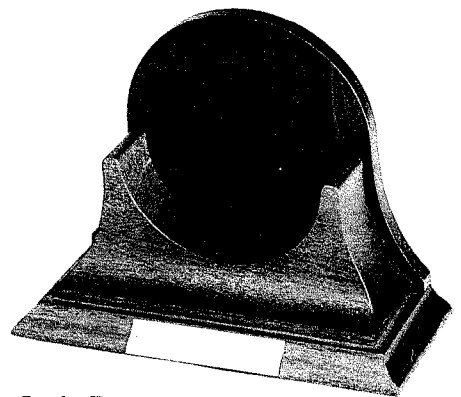


Chelsea's Ship's Bell and Matching Barometer Set



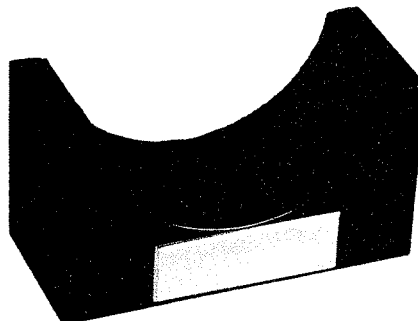
Style A (Gloucester only)

| Dial Size | Model No. |
|-----------|-----------|
| 4 1/2" | 25500 |



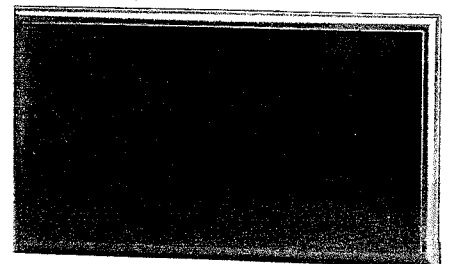
Style B

| Dial Size | Model No. |
|-----------|-----------|
| 4 1/2" | 23368 |
| 6" | 23370 |



Style C

| Dial Size | For Newport | All Others |
|-----------|-------------|------------|
| 3 1/2" | 23887 | 23887 |
| 4 1/2" | 23975 | 25501 |



Style E Model No. 53911

Chelsea's Engraving Service

Make that award or presentation complete. Add an engraved solid brass plate. You can do it by mail. Each of our plates can have up to 4 lines of copy with 35 characters per line. Engraving is double line, capital block letters.