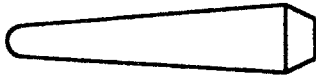


**Low Stretch Synthetic Rope** • U.S. Patent #5,022,780

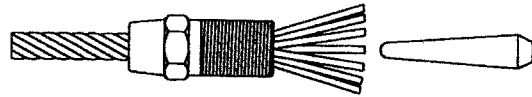
**SAR1000 Series Internal Wedge**



Electroline synthetic rope fittings for Kernmantle rope are supplied with the SAR1000 series internal plug. The sleeve has no exposed threads when assembled and is retained in the socket with a set screw.

**Typical Assembly**

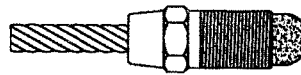
Rope passed through sleeve and strands fanned out for insertion of plug.



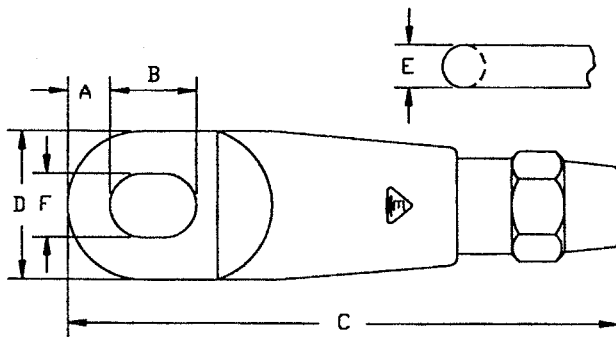
SLEEVE

PLUG

Plug driven in and strands melted together.

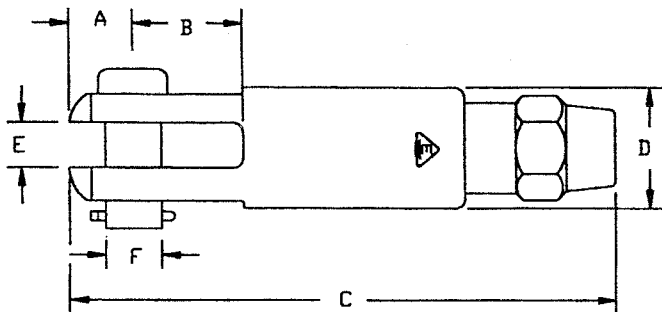


(see specific Assembly Procedures for details)



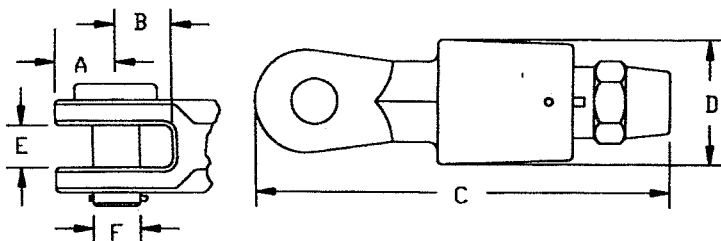
**Carabiner Eye Socket Assembly**

Rope Size	Catalog No. Anodized Aluminum	Dimensions (inches)					
		A	B	C	D	E	F
3/16 - 7/16	YAR-243	3/8	7/8	5-13/16	1-1/2	3/8	3/4
1/2	YAR-250	7/16	7/8	6-3/16	1-3/4	1/2	3/4
5/8	YAR-262	1/2	1	6-11/16	1-7/8	1/2	7/8



**Machined Series: Clevis Socket Assembly**

Rope Diameter	Catalog No. Anodized Aluminum	Dimensions (inches)					
		A	B	C	D	E	F
3/8 - 7/16	YAR-143	5/8	1	5-13/16	1-1/4	7/16	1/2
1/2	YAR-150	23/32	1-1/4	6-1/2	1-3/8	1/2	5/8
5/8	YAR-162	51/64	1-3/8	7-1/8	1-1/2	5/8	11/16



**Forged Series: Clevis Socket Assembly**

Rope Diameter	Catalog No. Anodized Aluminum	Dimensions (inches)					
		A	B	C	D	E	F
3/8 - 7/16	YAR-4843	23/32	7/8	5-13/32	1-1/2	19/32	5/8
1/2	YAR-4850	23/32	7/8	5-17/32	1-3/4	19/32	5/8
5/8	YAR-4862	23/32	7/8	5-21/32	1-3/4	19/32	5/8