

ROLLER BEARING-EQUIPPED SWIVELS

HIGH PERFORMANCE AT LOWER COST

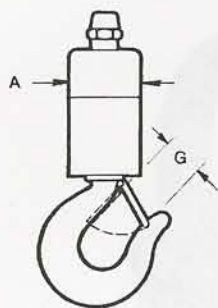
- Economically priced, these swivels contain a single roller bearing that accommodates the shorter rope lengths such as those used with lifting equipment. (These applications do not require the exceptionally low torque capability provided by ball bearing-equipped swivels.)
- Models with rope diameters of more than 1/4" are equipped with Timken® tapered roller bearings.
- Made of alloy steels to exacting tolerances, these swivels are zinc plated for corrosion resistance. They provide an ultimate strength of 5 to 1 over SWL (Safe Working Loads).

3000 SERIES ROLLER BEARING SWIVELS

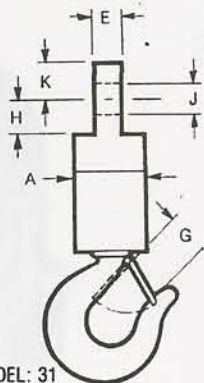
SIZE	SWL TONS	WIRE ROPE SIZE	A	C PIN DIA	D	E	F	G	H	I	J HOLE DIA	K	L HEX FLATS
12	.5	1/8	7/8	1/4	1/4	.234	1/2	N/A	1/2	7/16	1/4	3/8	-
18	.62	3/16	1	5/16	5/16	.297	5/8	N/A	9/16	1/2	5/16	1/2	-
25	.75	1/4	1-1/8	3/8	3/8	.359	3/4	N/A	5/8	9/16	3/8	5/8	-
31	1.5	5/16	1-7/8	3/4	13/16	11/16	1-3/8	1	1	1	13/16	15/16	2
37	2	3/8	1-7/8	3/4	13/16	11/16	1-3/8	1-1/16	1	1	13/16	15/16	2
43	3	7/16	2-1/4	3/4	1	3/4	1-3/8	1-11/32	1-3/16	1-1/8	1	1-1/8	2-1/4
50	3	1/2	2-1/4	3/4	1	3/4	1-3/8	1-11/32	1-3/16	1-1/8	1	1-1/8	2-1/4
56	5	9/16	3	1	1-1/8	1	1-3/4	1-11/16	1-1/2	1-1/4	1-1/4	1-1/2	3
62	5	5/8	3	1	1-1/8	1	1-3/4	1-11/16	1-1/2	1-1/4	1-1/4	1-1/2	3
75	8.5	3/4	3-1/4	1-1/8	1-9/16	1-1/4	2-1/8	2-1/16	1-5/8	1-1/2	1-3/8	1-5/8	3-1/4
87	10	7/8	3-1/2	1-1/4	1-3/4	1-7/16	3-1/8	2-1/4	2-3/8	1-7/8	1-5/8	1-13/16	3-1/2
99	15	1	4	1-3/8	1-3/4	1-15/16	3-1/8	3	2-3/8	1-7/8	2	2-1/8	4

ALL DIMENSIONS ARE IN INCHES

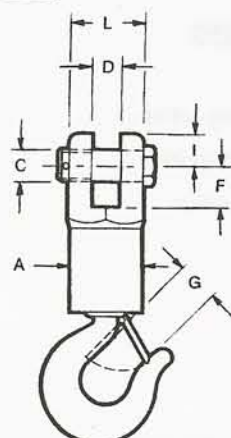
Specifications could change without notice.



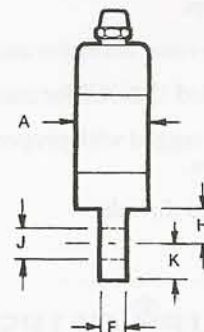
MODEL: 30



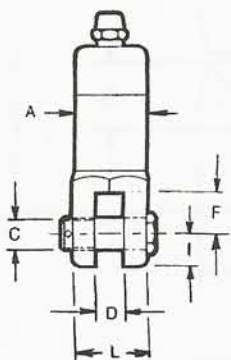
MODEL: 31



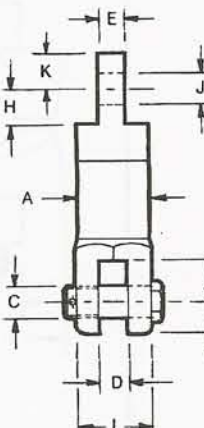
MODEL: 32



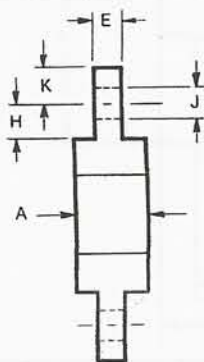
MODEL: 33



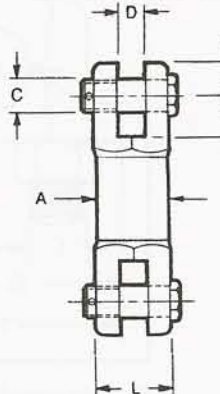
MODEL: 34



MODEL: 35*
*Model 38 - ends reversed



MODEL: 36



MODEL: 37